

Device Networking Access



RoHS compliant

Industrial 5/6-Port Unmanaged Ethernet Switches

■ ■ EH2005/EH2006

EH2005-Fm (Multi-mode)



EH2005-Fs (Single-mode)



EH2006

Technology

- 10/100BaseT(X) (RJ45), 100BaseFX (SC/ST connector)
- Broadcast storm protection
- Support IEEE 802.3/ 802.3u/ 802.3x
- 10/100M, Full/Half-Duplex, MDI/MDI-X auto-detection
- Local area transmit distance of 2 km with Multi-mode Fiber connections
- Long-haul transmit distance of 20 km with Signal-mode Fiber connections

Reliability

- Redundant dual DC power inputs
- Operating temperature ranges from 0~60°C
- Rugged high-strength case
- DIN-Rail or wall mounting ability
- Alarm out for power and link failure

The EH Series include 5/6-port Ethernet switches that provide two solutions, one with 6 RJ-45 ports and the other with 4 RJ-45 ports and one optic ST/SC port for your industrial applications. These EH series have been designed for industrial environments, such as in hazardous locations that comply with FCC, TUV, UL, and CE standards.

EH series protect itself from receiving too many broadcast packets. During normal use, broadcast packets will be forwarded to all ports except the source port. However, EH series will discard broadcast or multicast packets if the number of those packets exceeds a threshold in a preset period of time. When the preset period expires (about 800ms), it will then resume receiving broadcast or multicast packets until the threshold is reached again.

EH series provide two redundant power inputs that can be connected simultaneously to wide-range DC power sources. If one of the power inputs fails, the other live source acts as a backup to provide the EH series' power needs automatically.

Industrial 5/6-Port Unmanaged Ethernet Switches

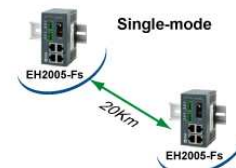
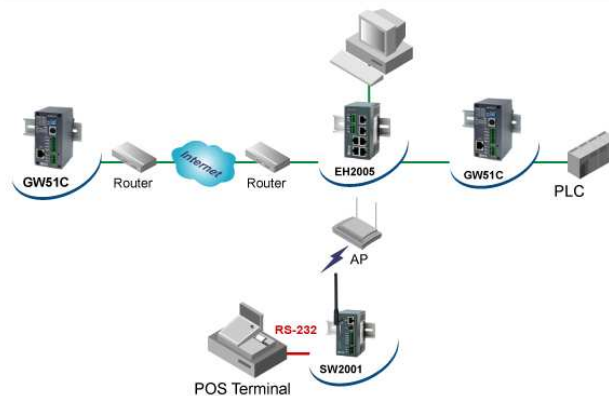
Specifications	
Technology	Standards: IEEE802.3, 802.3u, 802.3x Processing Type: Store and Forward Flow Control: IEEE802.3x flow control, backpressure flow control
Ethernet	RJ45 Ports for 10/100BaseT(X) auto negotiation speed Full/Half-duplex mode, and auto MDI/MDI-X connection
Optical Fiber	Multi-mode ST connector for 100 Base FX port Distance: up to 2Km Wave-length: 1270~1350 nm Sensitivity: -33dBm (Typical) Single-mode SC connector for 100 Base FX port Distance: up to 20Km Wave-length: 1260~1300 nm Sensitivity: -34dBm (Typical)
LED Indicators	Power, 10/100M, Data, Alarm
Power Requirement	Input Voltage: 9~30 VDC, Dual inputs Input Current (@24V): 0.35A Connector: Removable 3-pin Terminal Block for power input Reverse Polarity Protection: Present
Mechanical	Casing: IP40 protection, plastic case
Temperature	Operation: 0°C~60°C (32~140°F), Storage : -40°C~85°C (-40~185°F)
Humidity	5%~95% non-condensing
Dimension	45mm x 90mm x 80mm (W x H x D)
Weight	160g
Regulatory Approvals	Safety: UL, EMI: FCC Part 15, class A

Ordering Information (by Model)

EH1005-Fm: Embedded Type, 4 10/100BaseT(X) ports, 1 multi-mode, 100BaseFX port, ST connector
 EH1005-Fs: Embedded Type, 4 10/100BaseT(X) ports, 1 single-mode, 100BaseFX port, SC connector
 EH2005-Fm: Plastic Housing, 4 10/100BaseT(X) ports, 1 multi-mode, 100BaseFX port, ST connector
 EH2005-Fs: Plastic Housing, 4 10/100BaseT(X) ports, 1 single-mode 100BaseFX port, SC connector
 EH1006: Embedded Type, 6 10/100BaseT(X) ports
 EH2006: Plastic Housing, 6 10/100BaseT(X) ports

Optional Accessories

AD15-24C (US): AC100V~240V/DC24V, US adapter
 AD15-24D (EU): AC100V~240V/DC24V, EU adapter



Atop Technologies, Inc.
 TEL : +886-3-5508137
 FAX : +886-3-5508131
 sales@atop.com.tw
 http : //www.atop.com.tw

Delmation Products BV
 website: www.delmation.nl
 Tel: +31 (0)79-3422041
 Fax: +31 (0)79-3424461

Design and specification are subject to change without notice.
 All other product names referenced herein are registered trademarks of their respective companies.

