

WIRELESS

WIRELESS

SECTION CONTENTS



WIRELESS ETHERNET BRIDGE

Zero Set Up - Ultra High Speed

page 37



Zlinx Xtreme OUTDOOR RATED

Wireless Radio Modems & I/O

page 38



Zlinx STANDARD

Short & Long Range Wireless
Radio Modems & I/O

page 39

Get from Here to There with Wireless Solutions from your Connectivity Experts

Wireless has rapidly been redefining “how to get there from here” for industrial networking. The advantages seem crystal clear – eliminate expensive cable runs, quickly install and manage remote assets, never negotiate right-of-way access again. So, what’s the hesitation?

Well...there are a bunch of questions about wireless.

- What radio is right for me? Wi-Fi? 2.4 GHz?
- Will it meet my communication requirements?
- How am I going to get this thing installed and tested?
- What am I missing?

Call us. Our tech team would love to talk to you about wireless. Cut through the uncertainty and get straightforward answers to complex questions. You deserve to save yourself time and frustration.

Whether you’re ready to buy wireless today...or just learning about it for tomorrow, we’re here to help. Consider us your industrial wireless experts. (We really are!) Toll free **+353 (0)91 792 444**

Award Winning Wireless

ZXT24-RM

Our Outdoor Rated Zlinx Xtreme line of wireless radio modems, peer-to-peer and Modbus I/O's were enthusiastically received by customers last year. Superb functionality – great value!

See page 38 for details



Delmation Products BV T +31 (0)79 3422041
info@delmation.nl www.delmation.nl

GhostBridge5 Wireless Ethernet Bridge – Wicked Fast – Wicked Easy

Secure, long range wireless Ethernet right of the box

Zip...Zilch...Zero Set Up



GHOSTBRIDGE5

Wireless Ethernet was never this easy or this inexpensive. Just open the box, aim it, mount it and plug it in. That's it. Each pair is matched and pre configured.

Long Range: The built in sector antenna gives you 80 degrees of coverage, so lining them up is easy, even if you don't have a clear line of sight. The antenna has 15 dBi gain to give you up to 9 miles of range with no additional antenna.

High Speed: At up to 150 Mbps, there are no bottlenecks or latency problems, even with demanding applications like video.

Worry Free Security: WPA2 128-bit security, the highest level allowed by the US government on devices that cross international boundaries. It's rock solid secure. No need for any extensive set-up to keep your data safe.

With GhostBridge5 you'll achieve blazing fast link speeds – performance that will make you wonder why you ever ran cables in the first place!

Features & Benefits

- An 80°, 15 dBi sector antenna integrated into the housing
- 5GHz radio built from 802.11n 2X2 MIMO technology for long range connectivity (15 km/9 miles) – No low tech proprietary RF chipset!
- Temperature range of -30 to +80°C
- Case: UV stable plastic rated for outdoor use
- Data rate: 150 Mbps, max

Additional Features & Benefits

- Power (8W); Includes (4) 24V PoE injector adapters – 2 for AC, 2 for DC so you can use any available power
- Configured to WPA2 128-bit security – user configurable to other standards
- Mounting: Integrated pole mount (optional wall mount brackets sold below)
- RJ45 connectors for data and power

APPLICATIONS: Create a transparent, secure, high-speed link between remote stations and a central office. Bridge 2 networks or hard-to-reach nodes together. Connect remote devices (IP camera or other) to a LAN.

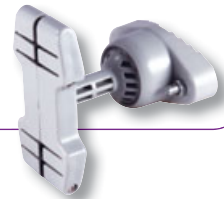
GhostBridge5 Wireless Ethernet Bridge (sold as matched pair)

You may also need:

MOCAP silicone installation tape: for water tight seals
1" wide - 36' roll

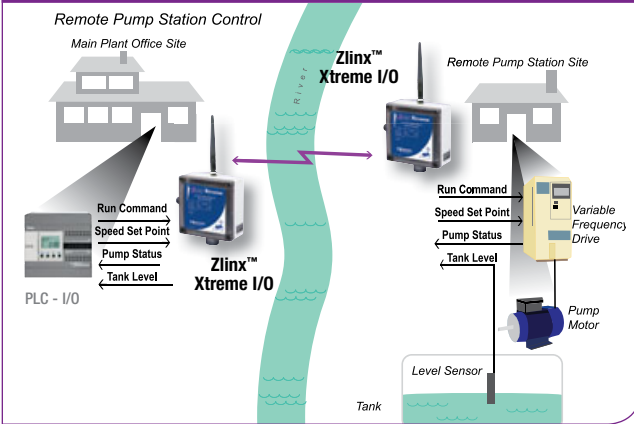
Optional wall mount bracket

GMT25

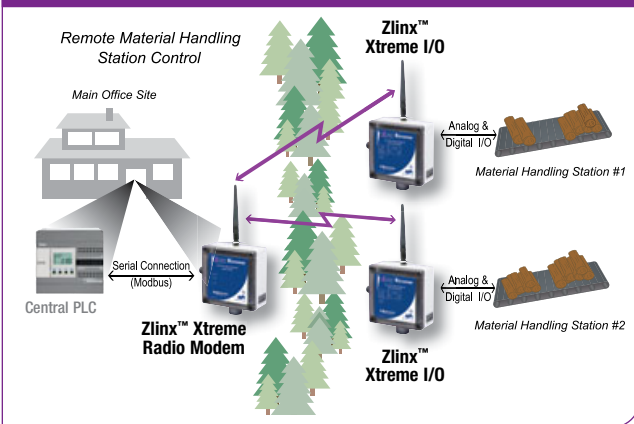


What Walter H., President of Vortechs Automation, had to say after installing GhostBridge: ***"I went from cups and strings to super-fast Ethernet with the GhostBridge punching through 700 feet of trees to beam the signal to my remote site."***

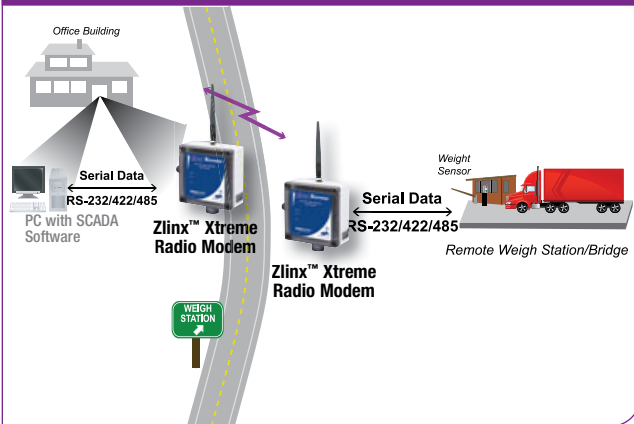
Peer-to-Peer I/O (cable replacement)



Modbus I/O



Serial-to-Serial Wireless Communications



Zlinx™ Xtreme

IP67, Outdoor, Industrial Wireless Peer-to-Peer or Modbus I/O



Features & Benefits

- IP67 rated – direct machine mount
- Best in class Latency
- Top of the line AES security
- Flexible configuration for multiple types of analog/digital I/O's

With push button set-up, Zlinx Xtreme introduces plug and play simplicity into a single box for industrial wireless. Whether you need to monitor remote I/O devices, or connect multiple devices to a Modbus RTU master, Zlinx Xtreme is designed for outdoor use and is compatible with standard indoor Zlinx units.

ZXT24-IO-222R2 2.4 GHz IP67 I/O module

You may also need...

ZZ24D-ANT1	2.4 GHz spare antenna
CLG-60-24	24VDC 60W, IP67 outdoor power supply
USBAMB-6F	USB programming cable 6 ft

Peer to Peer I/O requires 2 I/O modules, Modbus I/O requires 1 Radio Modem and a Zlinx I/O module for each remote device.

Zlinx™ Xtreme Radio Modems

Easily connect multiple serial devices One-to-one and one-to-many configurations possible



Features & Benefits

- Same features as the I/O modules
- Standard or high gain antenna options
- Connect to RS-232/422/485
- Compatible with Maxstream™ radios

IP67 rated outdoor serial radios can be used for one-to-one device communication, or one-to-many. Ranges up 14 miles outdoors with the standard antenna. Up to 40 miles with the optional high gain antenna. Questions on range? Go to www.bb-europe.com/wireless and try out our wireless range estimator.

ZXT24-RM 2.4 GHz Radio Modem

You may also need...

ZZ24D-ANT1	2.4 GHz spare antenna
CLG-60-24	24VDC 60W, IP67 outdoor power supply
USBAMB-6F	USB programming cable 6 ft



Zlinx™ Industrial Wireless I/O

Choose Short or Long Range

Class 1/Div 2 Rated – Windows 7, 64 bit compatible



Features & Benefits

- Peer-to-Peer mirrored I/O mapping
- Versatile Power 10 to 40VDC or 24VAC
- AES Encryption
- Wide Temp
- Low latency response rates –to 15mS

With range options of 300 feet to 40 miles, the Zlinx™ Industrial offers a wide range of possibilities for P2P cable replacement and Modbus device control. Both 2.4 GHz short range and 900 MHz long range modules come with 2 and 4 digital I/O options or 2 digital/2 analog I/Os. A maximum of 247 devices can be connected to the Modbus master. Modbus I/O requires 1 serial radio modem. Call our free tech support hotline at +353 (0)91 792 444 to discuss your ideal configuration.

ZZ24D-NB-SR	2.4 GHz 4 Digital (PNP) I/O
ZZ24D-NA-SR	2.4 GHz 2 Digital/2 Analog (PNP) I/O

Zlinx™ Xtreme I/O Starter Kits

Everything you need in one box



Peer-to-Peer I/O Kit

Great for cable replacement between multiple digital and analog I/O's.

- 2 - 2.4GHz Wireless I/O's
- 2 - 24V power supplies
- 1 - 6 ft USB programming cable
- Cable Glands and conduit hubs
- Quick Start Guides



Modbus I/O Kit

Connect multiple remote devices to a Modbus RTU master.

Includes everything above PLUS 1 2.4GHz Wireless Radio Modem and 1 additional 24V power supply

For further details please call +353 (0)91 792 444 or visit us online at www.bb-europe.com

Zlinx™ DIN Mount Radio Modems

License Free – no annual costs

Serial cable replacement has never been easier



Features & Benefits

- Modbus compatible
- Class 1/Div 2 rated (long range only)
- RPSMA male dipole, antenna included
- Compatible with Digi Maxstream™
- Dual power supply

Zlinx™ makes running cable obsolete when connecting serial devices. The 900 MHz long range radio has an indoor maximum distance of 3000 feet,

and outdoor maximum of 14 miles (with supplied antenna), or up to 40 miles with the high gain antenna. Choose one radio modem per serial device you wish to connect. Always choose the same frequency modems.

ZP24D-250RM-SR	2.4 GHz radio modem
----------------	---------------------

See online for a full line of optional accessories including DIN rail power supplies, spare antennas, DIN mounting clips, DIN to Panel conversion brackets and Surge

Zlinx™ Radio Modem Starter Kits

Choose Short or Long Range Radios

Zlinx™ IP30 and Zlinx™ Xtreme IP67 rated options



Each kit includes:

- 2 - Radio modems
- 2 - 24V power supplies
- 2 - 6 foot serial cables
- Software CD
- Quick Start Guide

Get started now with our serial to serial wireless kits. All the basics for wireless serial device communication in one box.

RM-SR-KIT	IP30 2.4Gfz short range starter kit
-----------	-------------------------------------