



Model ESP901 Vlinx Ethernet Serial Server



Ethernet Enable Any Serial Device

Now you can Ethernet enable any serial device. Use B&B's Vlinx Serial Server technology to put your serial ports to work for you. Imagine the ability to communicate with every piece of equipment from any networked PC. Eliminate site visits just to find a need to make a minor configuration change. Reduce service calls and increase productivity by knowing what your equipment is doing before you get a trouble-report. Spend more time doing the work you're paid to do instead of chasing down nuisance problems with remotely located equipment.

Do you have equipment with serial ports that you've left unconnected? Much of today's high-tech equipment ships with a serial port for programming, monitoring or diagnostics. 80% of the serial ports are left unconnected, often because a person travels to the port to make the connection or a permanent PC is not desirable. With B&B's Vlinx Serial Server, you can put all of those ports to work for you.

Simply connect the Vlinx server to the equipment's serial port, and connect the Vlinx Ethernet port to your LAN. Your equipment is now online. It will appear as a local COM port on any networked PC running our Virtual Serial Port software. No software customization required, just run the appropriate software for your equipment.

Industry Applications

B&B Electronics' new Model ESP901 integrates the benefits of Ethernet communications with existing serial devices by offering the combination of three serial interfaces, RS-232, RS-422, and RS-485. The Ethernet connection will auto select 10BaseT or 100BaseTX.

The ESP901 provides a Windows host control over serial devices located virtually anywhere on a TCP/IP or UDP/IP Ethernet connection. It even gives authorized users control over the connected serial device or the ESP-901 Menu from anywhere outside the LAN.

Operation Modes

Virtual COM port
TCP/IP socket and tunneling
UDP/IP socket and tunneling

Features

DIN rail or Panel mount
Supports 10/100 Mbps Ethernet
Supports RS-232, RS-422, and RS-485 serial interface
Supports LAN and WAN communications
In Server mode supports individual client sessions for security.
Management access password protected.
Virtual COM drivers for Window NT/98/ME/2000/XP

Product Specifications

Serial Memory: 64K bytes
Serial Connection: DB9 male – DTE configuration
Ethernet Connection: RJ-45

International Headquarters:

B&B Electronics Mfg. Co. 707 Dayton Road P.O. Box 1040 Ottawa, IL 61350 USA
815-433-5100 Fax 433-5104 www.bb-elec.com orders@bb-elec.com support@bb-elec.com

B&B Electronics Ltd Westlink Commercial Park Oranmore Co. Galway Ireland
+353 91 792444 Fax +353 91 792445 www.bb-europe.com orders@bb-elec.com support@bb-europe.com

Interface

Serial One-RS-232, RS-422, OR RS-485, Dip Switch Selectable
 LAN 10/100 Mbps Auto-detecting – 10 Base T, 100 Base TX
 Supported Signals RS-232 - TX, RX, RTS, CTS, DTR, DSR, DCD, GND
 RS-422 - TX+, TX-, RX+, RX-, RTS+, RTS-, CTS+, CTS-, GND
 RS-485 - Data +, Data –
 Data Rate 110 bps to 230.4 kbps
 Protocols TCP, IP, ARP, DHCP, Telnet, HTTP, UDP, ICMP
 Management Vlinx Manager, Serial Console, Telnet, (soon to be released Web server)
 Firmware upgradable

Power & Environment

Power Requirements: 12 VDC @ 200 mA
 (B&B #232PS3 110VAC to 12VDC 500 mA power supply included)
 Operating Temperature: 32 to 122 °F (0 to 50 °C)
 Storage Temperature: -4 to 140 °F (-20 to 60 °C)
 Humidity: 0 - 90% non-condensing
 Approvals: CE, FCC
 Dimensions: 3.35 x 4.5 x .90 in (8.5 x 11.5 x 2.3 cm)

Heartbeat Connection Ensures Reliable Communications

The Model ESP901 provides automatic resumption of the TCP data connection in case of a power failure or loss of an Ethernet connection on either the client or server. TCP port 5300 is reserved for the Heartbeat connection. After a client, either virtual COM or ESP901, establishes a data connection to an ESP901 server, it will automatically start the Heartbeat connection.

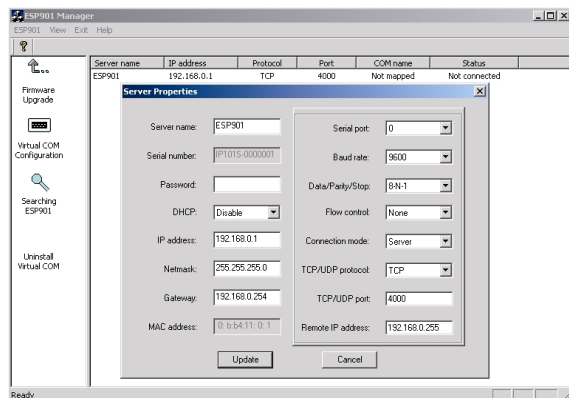
Once the Heartbeat connection is established the server sends a signal to the client every 5 seconds. If the signal is not received, the ESP901 will attempt to reconnect the TCP data connection every 5 seconds until communication is established again.

Without this feature a device that loses a connection and stops communicating would not be able to reconnect without a person attending to the problem. The Heartbeat feature will only work with virtual COM and TCP direct IP connections. Not usable with a UDP application.

ESP901 Management Software

One of the advanced features of the Vlinx management software allows easy access to the ESP901 to configure desired settings. Although Telnet and Console mode may also be used, management access to the Vlinx configuration menu will be the fastest and easiest.

When the new ESP901 is connected to the LAN, just open our management software, click the Search button and it will instantly display the ESP901 in the window. This is a just one example of the many advanced features we have integrated into the ESP901. Call our Technical Support Department for more information.



System Integrators and OEMs

Call and ask how B&B Electronics can best fill your product requirements.

Accessories

DRAD35DIN-Rail Adapter Clips

International Headquarters:

B & B Electronics Mfg. Co. 707 Dayton Road P.O. Box 1040 Ottawa, IL 61350 USA
 815-433-5100 Fax 433-5104 www.bb-elec.com orders@bb-elec.com support@bb-elec.com

B & B Electronics Ltd Westlink Commercial Park Oranmore Co. Galway Ireland
 +353 91 792444 Fax +353 91 792445 www.bb-europe.com orders@bb-elec.com support@bb-europe.com